

Congratulations on your purchase of an Arnett® air suspension product. We at Arnett Incorporated are proud to offer a high quality product at the industry's most competitive pricing. Thank you for your confidence in us and our product.

Proper installation is essential to experience and appreciate the benefits of this system. Please take a moment to review these installation instructions before you begin to install these components on your vehicle. The removal and installation of air suspension products should only be performed by a fully qualified, ASE Certified, professional.

It is equally important to be aware of all necessary safety measures while installing your new Air Suspension System. This includes proper lifting and immobilizing of the vehicle and isolation of any stored energy to prevent personal injury or property damage.

## "Engineered to Ride, Built to Last™"



**WARNING:** *The air suspension system is under pressure (up to 10 bar, or 150 lbf/in). Verify pressure has been relieved and disconnect power to the air suspension system prior to disassembly. Do not allow dirt or grease to enter the system. Always wear standard hand, ear, and eye protection when servicing the air suspension system.*

Arnett® is committed to the quality of its products. If you have a question or problem with any Arnett product, please contact Arnett by calling **800-251-8993** during normal business hours or email [techassistance@arnottinc.com](mailto:techassistance@arnottinc.com). (In the EU please call +31 (0)73 7850 580 or email [info@arnotteurope.com](mailto:info@arnotteurope.com)).

## GENERAL INFORMATION:

Reading this manual signifies your agreement to the terms of the general release, waiver of liability, and hold harmless agreement, the full text of which is available at [www.arnottinc.com](http://www.arnottinc.com).

- Not to be stored below 5°F (-15°C) and above 122°F (50°C).
- Avoid damage to air lines and cables.
- Removal and installation is only to be performed by fully qualified personnel.
- Use car manufacturer's diagnostic software.

**CAUTION:** Damage to the vehicle and air suspension system can be incurred if work is carried out in a manner other than specified in the instructions or in a different sequence.



To avoid the possibility of short circuits while working with electric components consult your owner's manual on how to disconnect your battery.



Consult your vehicle owner's manual, service manual, or car dealer for the correct jacking points on your vehicle and for additional care, safety and maintenance instructions. Under no circumstances should any work be completed underneath the vehicle if it is not adequately supported, as serious injuries and death can occur.

## AIR SUSPENSION COMPRESSOR ASSEMBLY REMOVAL

1. SET THE STEERING TO STRAIGHT AHEAD AND RAISE THE VEHICLE.
2. LOCATE THE AIR COMPRESSOR. (FIGURES A)



FIGURE A

3. DISCONNECT THE (2) AIR LINES FROM THE COMPRESSOR. (FIGURE B, C)

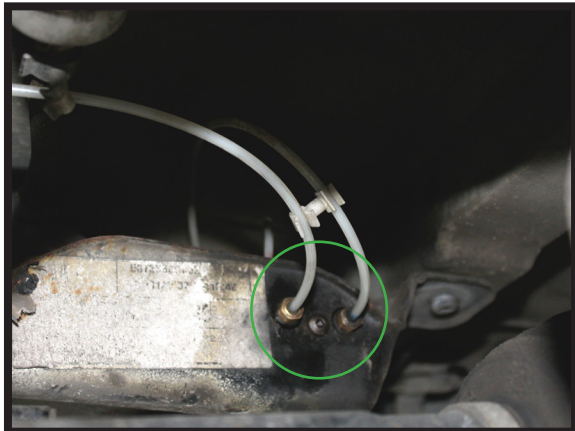


FIGURE B



FIGURE C

4. DISCONNECT THE AIR FILTER FROM CHASSIS. IT WILL BE REUSED DURING INSTALLATION. (FIGURE D)

**NOTE:** Thoroughly inspect your air filter and hoses for damage prior to reuse. Damaged hoses and filter may void your warranty.



FIGURE D

5. REMOVE THE 3 OUTMOST TORX SCREWS TO RELEASE THE COMPLETE UNIT. (COMPRESSOR/VALVEBLOCK) (FIGURE E)



FIGURE E

6. REMOVE THE THREE (3) ELECTRICAL CONNECTORS (1\*VALVE BLOCK/2\*COMPRESSOR). (FIGURE F)

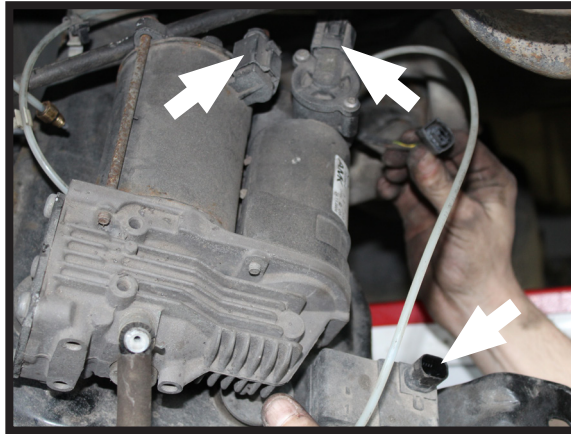


FIGURE F

7. REMOVE COMPRESSOR ASSEMBLY FROM THE VEHICLE. (FIGURE G)

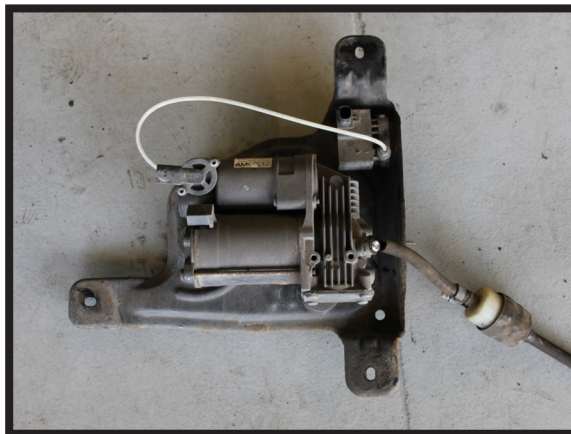


FIGURE G

## AIR SUSPENSION COMPRESSOR REMOVAL

1. DISCONNECT THE AIR LINE FROM THE COMPRESSOR. (FIGURE H, I)

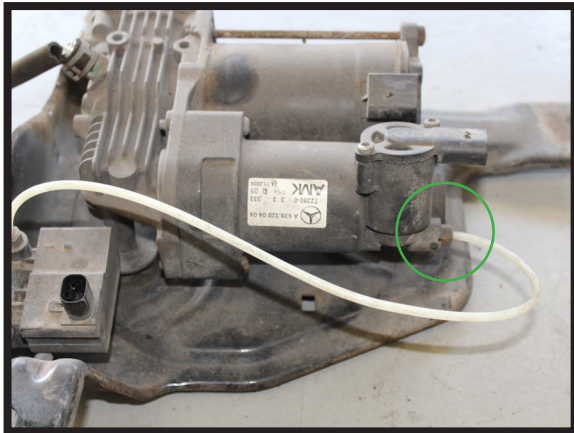


FIGURE H

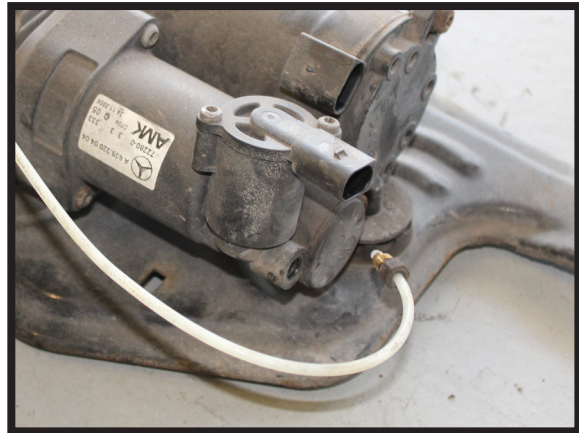


FIGURE I

2. REMOVE THE THREE (3) TORX SCREWS THAT SECURE THE MOUNTING BRACKET TO THE COMPRESSOR. (FIGURE J, K)

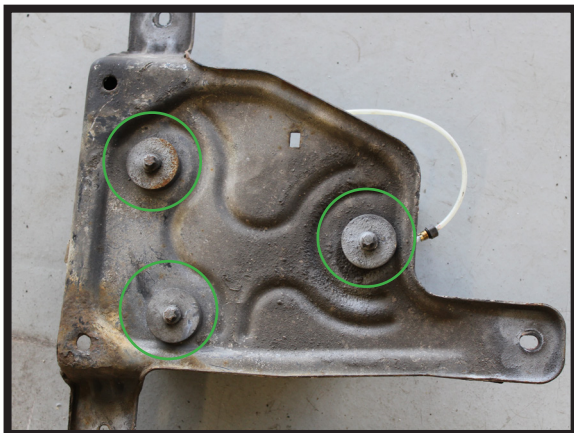


FIGURE J



FIGURE K

## AIR SUSPENSION COMPRESSOR ASSEMBLY INSTALLATION



*Tighten all nuts and bolts to manufacturer's specifications during the installation process.*



*Do not remove the air fitting from the air suspension compressor. Doing so may cause damage and/or void warranty. Remove the white shipping pin from the new air fitting and insert the air line until fully seated.*

1. AIR SUSPENSION COMPRESSOR ASSEMBLY INSTALLATION IS IN REVERSE ORDER OF REMOVAL.



## WARNING



### CRACKED AIR SPRINGS MUST BE CHANGED TO VALIDATE THE WARRANTY ON THE COMPRESSOR

PLEASE READ ADDITIONAL WARRANTY INFORMATION ON THE BACK OF YOUR INVOICE



### PROPER PROCEDURE FOR ASSESSING YOUR AIR SPRINGS CONDITION:

1. TURN OFF AIR SUSPENSION SWITCH IF EQUIPPED.
2. REFER TO OWNER'S MANUAL FOR PROPER LIFTING TECHNIQUES AND JACKING POINTS.
3. RAISE THE VEHICLE.
4. INSPECT AIR SPRINGS FOR ANY TYPE OF CRACKS OR EXCESSIVE WEAR. CRACKS IN AIR SPRINGS ARE EVIDENT IF THEY ARE LEAKING. THIS WILL CAUSE THE COMPRESSOR TO OVERHEAT FROM CONTINUOUS OPERATION.

Arnett® is committed to the quality of its products. If you have a question or problem with any Arnett product, please contact Arnett by calling **800-251-8993** during normal business hours or email [techassistance@arnottinc.com](mailto:techassistance@arnottinc.com). (In the EU please call +31 (0)73 7850 580 or email [info@arnotteurope.com](mailto:info@arnotteurope.com)).