

DO NOT REMOVE OR TIGHTEN AIR FITTING ON THE NEW PART



REMOVAL

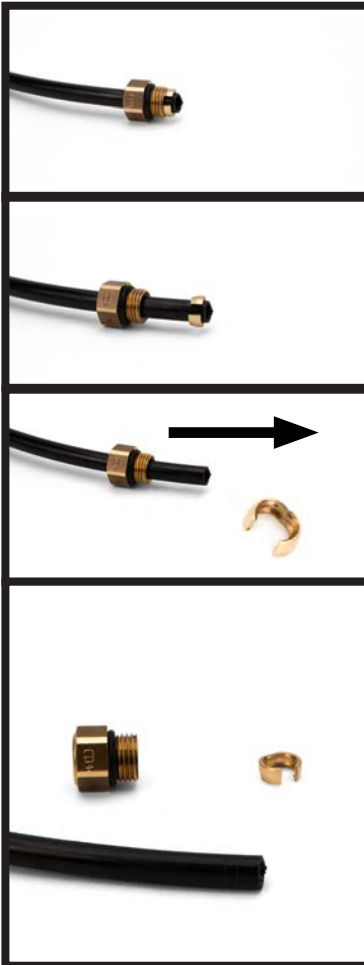


Prior to inserting the existing air line into the new air fitting you will need to remove the old original equipment air line fitting.

INSTALLATION



These parts come with pre-installed air line fittings for your convenience. **Do not remove or tighten.**



#1

OE AIR LINE FITTING

#2

SLIDE THE THREADED PORTION UP THE LINE AND SPREAD THE COLLET OPEN TO REMOVE

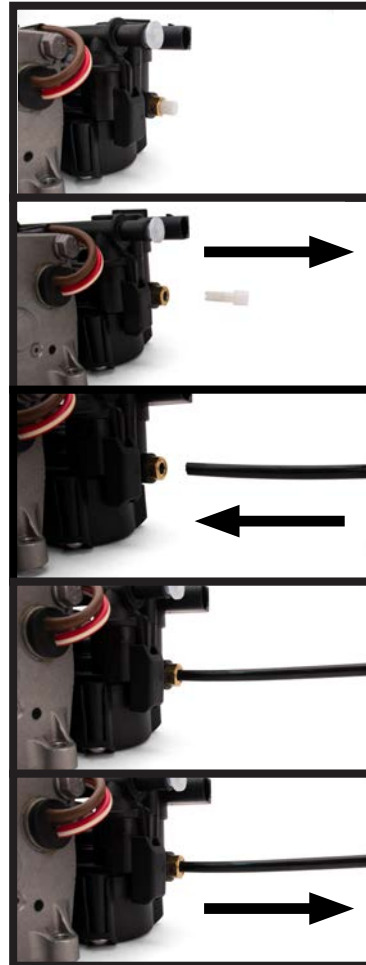
#3

SLIDE THE AIR FITTING OFF OF THE AIR LINE

#4

AIR LINE IS READY FOR INSTALLATION

NOTE: SCRATCHES AND/OR DEEP CUTS IN THE AIR LINE CAN RESULT IN POSSIBLE LEAKS. INSPECT THE AIR LINE BEFORE INSERTION. AIR LINE NEEDS TO BE REPLACED IF DAMAGED.



#1

AS RECEIVED

#2

REMOVE & DISPOSE OF SHIPPING PIN

NOTE: SHIPPING PIN MAY BE WHITE OR BLACK.

#3

INSERT THE AIR LINE INTO THE FITTING AND PRESS UNTIL FIRMLY SEATED

#4

AIR LINE INSERTED

#5

PULL AIR LINE OUTWARD TO LOCK AND ENSURE A SECURE CONNECTION

Arnott® is committed to the quality of its products. If you have a question or problem with any Arnott product, please contact Arnott by calling 800-251-8993 during normal business hours or email techassistance@arnottinc.com. (In the EU please call +31 (0)73 7850 580 or email info@arnotteurope.com)